



Commercial Grade Truck Equipment SM

LIGHTS AND LIGHTING ACCESSORIES



Model	Description
LHH	Light Holes Punched - 4 in body, 4 1/2" diameter - High location for stop, tail, turn and back-up light. Not available with crane reinforcement. Per set.



Model	Description
LHL	Light Holes Punched - 4 in body, 4 1/2" diameter - Low location for stop, tail, turn and back-up light. Not available with crane reinforcement. Per set.



Model	Description
LITEMOUNT	Bracket Light Holes Punched - 2 in each Bracket, 4 1/2" diameter. For stop, tail, turn, back-up light, and license plate light. For external mounting on rear of body. Recommended for crane reinforced service body. Per set.



Model	Description
LITEMOUNT3	Bracket Light Holes Punched - 3 in each bracket 4 1/2" diameter holes.



Model	Description
LTK2	Light Kit - Flush Mount, Rubber Grommet, Plug-in for bodies over 80" wide. Includes stop, tail, turn light, 2 back-up lights, license plate light, 3 RID lights, marker lights, and reflectors. Includes wiring harness for Ford Super Duty trucks.



Model	Description
LTK LED2	Light Kit - Flush Mount, Rubber Grommet, Plug-in for bodies over 80" wide. Includes LED stop, tail, turn light, 2 back-up lights, license plate light and bracket, Light bar with 3 RID lights, 2 round amber and 2 round red marker lights, and 2 reflectors. Includes wiring harness. NOTE: Optional adapter required.



Model	Description
LTK LED4	Light Kit - Flush Mount, Rubber Grommet, Plug-in for bodies over 80" wide. Includes LED stop, tail, turn light, 2 incandescent backup lights, license plate light and bracket, Light bar with 3 RID lights, 2 round amber and 2 round red marker lights, and 2 reflectors. Includes wiring harness. NOTE: Optional adapter required.



Quick Reference

Truck Make / Model		(Adapter based on Light Kit)	
		Incandescent Light Kit (LTK2)	LED Light Kit (LTK LED2 / LTK LED4)
FORD 2024	Bed Removal ^a	WHA33 ^b	WHA33 ^b WHA15
	Box Delete	Not Available	
	Cab Chassis (F-250, F-350, F-450, F-550 & F-600)	WHA18	WHA18 WHA15
	Cab Chassis (F-650 & F-750)	Hard Wire	Hard Wire
GM 2024	Bed Removal	WHA31	WHA31 ^c
	Box Delete	WHA30	WHA30
	Cab Chassis (2500 & 3500)	WHA30	WHA30
	Cab Chassis (4500, 5500 & 6500)	Hard Wire	Hard Wire
RAM 2024	Bed Removal	Hard Wire	Hard Wire WHA15
	Box Delete	Hard Wire	Hard Wire WHA15
	Cab Chassis (2500, 3500, 4500, 5500)	WHA21	WHA21 WHA15

Footnotes:

- ^a Limited to XL and XLT trim, without 360° camera and Blind Spot Info Systems (BLIS) features Additional
- ^b hard wiring may be required on truck (ref Ford Bulletin Q-356)
- ^c GM trucks with LED taillights require dealer ZW9 re-programming (ref GM Bulletin 194)

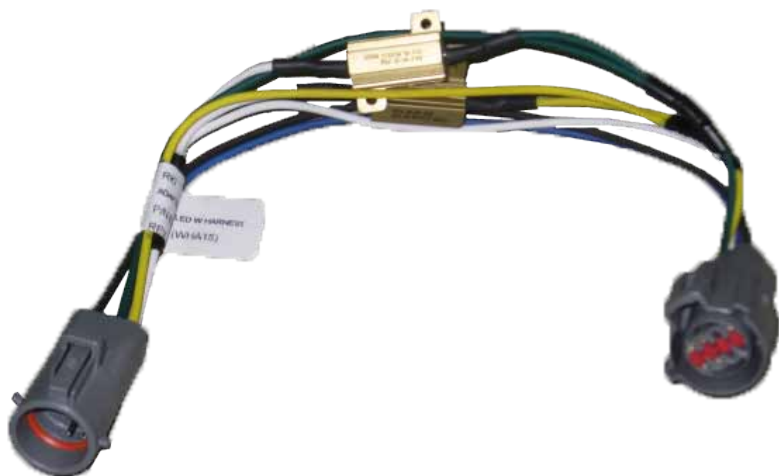
General Notes:

1. Bed Removal is when the bed is taken off the truck by the upfitter or customer
2. Box Delete is when the truck is ordered from the factory with the bed not included
3. "Pick-Up" trucks are 37CA, 40CA, 42CA, 56CA, and 57CA
4. "Cab-Chassis" trucks are 60CA, 84CA, 102CA, 108CA, and 120CA



Commercial Grade Truck EquipmentSM

LIGHTS AND LIGHTING ACCESSORIES



Model	Description
WHA15	Power Resistor Wiring Adapter - from RKI wiring harness (WHW) for LED light installations. Refer to adapter listings for more details..



Model	Description
WHA18	Wiring Adapter Kit – from RKI wiring harness (WHW) to 2017 Ford Super Duty Pickups and 2002 and later Ford Super Duty Cab Chassis. Required for incandescent or LED light kits.



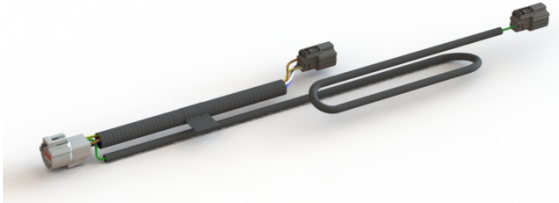
Model	Description
WHA21	Wiring Adapter Kit – from RKI wiring harness (WHW) to Dodge 2007 and later Cab Chassis. Adapter WHA15 also required for LED light Installations.

NOTE: Due to current Dodge light design RKI is unable to offer a direct plug-in adapter for 2007 and newer Dodge factory box-on Pickups, contact Dodge for instructions on how to wire these vehicles.



Commercial Grade Truck Equipment SM

LIGHTS AND LIGHTING ACCESSORIES



Model	Description
WHA28	<p>Wiring Adapter Kit - 2020 GM (pick ups and chassis cab) (Left=Black and Right=Black) to WHW wiring harness (round).</p> <p>NOTE: Truck Dealer reprogramming may be required for pick up bed removal applications.</p> <p>Adapter WHA15 also required for LED light installations.</p>



Model	Description
WHA29	<p>Wiring Adapter Kit - 2020 Ford pick up bed removal (Grey rectangular) to WHW wiring harness (grey round).</p> <p>NOTE: For pickup bed removal applications, Truck Dealer reprogramming may be required. Adapter WHA15 is also required for LED light installations.</p> <p>The smaller harness with black rectangular 12 pin plug is only needed if truck is equipped with Blind Spot Information Systems.</p>



Model	Description
WHA30	<p>Wiring Adapter Kit - 2021-2023 GM (pickups and chassis cab) Left=Black for (Driver/Street) side and Right=Light grey for (Passenger/Curb) side to WHW wiring harness (Grey Round).</p> <p>NOTE: For pickup bed removal applications, Truck Dealer reprogramming may be required. Adapter WHA15 is also required for LED light installations.</p>



Model	Description
WHA31	<p>Wiring Adapter Kit - 2024 GM pick up bed removal. (Left=Short Black and Right=Long Black) to WHW wiring harness (round Grey).</p> <p>NOTE: Truck Dealer reprogramming required for pick up bed removal with LED taillights applications.</p>



Model	Description
WHA33	<p>Wiring Adapter Kit - 2024 Ford pick up bed removal (Black rectangular) to WHW wiring harness (Grey round).</p> <p>NOTE: For pickup bed removal applications, hardwire may be required. Adapter WHA15 is required for LED light installations.</p> <p>Limited to XL and XLT trim, without 360 degree camera and Blind Spot Information Systems.</p>



Commercial Grade Truck Equipment SM

LIGHTS AND LIGHTING ACCESSORIES

Model	Description
WHW	Wiring Harness, Wide Bodies – direct plug-in harness for 2008 Ford Super Duty. WHW harness is included in LTK2, LTK LED2 & LTK LED4 light kits or can be purchased separately. NOTE: Optional adapters required for direct plug-in for Ford Super Duty Cab Chassis, Dodge and GM applications.



Model	Description
CMPTLGT	Dome light for compartment.
INSTCMPTLGT	Install dome light. Per compartment.



LED Strip Lighting Kits

Model	Application
BLTKLED60	40" - 60" CA bodies – 6 compartments
BLTKLED84	84" CA bodies – 8 compartments
BLTKLED60T	40" - 60" CA top opening bodies- 6 compartments and 2 top opening compartments
BLTKLED84T	84" CA top opening bodies – 8 compartments and 4 top opening compartments

Each kit Contains:

Easy to install adhesive backed IP 65 rated LED light strips - (one strip for each vertical and horizontal compartment).
Door activated switches, which turn the light on when the compartment door is opened,
Brackets to attach switches to the service body
and connectors for easy joining of wires.

For service bodies with the #2 door arrangement, an additional strip may be ordered for optimal illumination, consult factory for pricing.