



COMMERICAL GRADE TRUCK EQUIPMENT

2500 Series Crane Manual



Models: 2500-3-9

Serial Number: _____

Date: _____

RKI, Inc.
2301 Central Parkway
Houston, TX. 77092
Phone: 713-688-4414
Fax: 713-688-8982
www.rkius.com

TABLE OF CONTENTS

Description	Page
PACKING LIST	2
IMPORTANT NOTICE	3
SPECIFICATIONS	4
OVERALL DIMENSIONS	5
2500 SERIES CAPACITY CHART	6
INSTALLATION INSTRUCTIONS	7
OPERATING INSTRUCTIONS	9
INSPECTION & MAINTENANCE SCHEDULE	13
2500 MAIN ASSEMBLY	14
2500 TURRET ASSEMBLY	15
2500 WIRING ASSEMBLY	16
2500 TRAVELING BLOCK ASSEMBLY	17
2500 WINCH ASSEMBLY	18
SPARE PARTS	19
TROUBLESHOOTING	20
LIFETIME WARRANTY	21

PACKING LIST 2500 SERIES CRANE

The following items are included with your RKI 2500 Series crane.

- 1 - Crane Assembly
- 1 - Crane Instruction Manual
- 1 - Carton with the Following Contents
 - 1 - #43295 "Hot" Cable; #2 ga. x 25' x 3/8" dia.
 - 1 - #43738 Ground Cable; #2 ga. X 3' x 3/8" dia.
 - 6 - #43512 Cable Retaining Clip.
 - 4 - #19152 Mounting Bolt; 1/2" x 2-1/2" grade 8.
 - 1 - #41140 Remote Control; 15'.
 - 1 - #44110 Rotation Lock Screw.
 - 8 - #07889 Flat Washer; 1/2".
 - 4 - #03030 Lock Washer; 1/2".
 - 4 - #43520 Hex Nut; 1/2" grade 8.

IMPORTANT NOTICE

RKI, Inc. cannot possibly know or even anticipate all of the varied uses and applications that may be found for its crane products. For that reason, the company expressly disclaims any and all responsibility for the manner and methods used by the installer of these products. The company recommends that the installer of its crane products follow sound engineering principles and comply fully with each and every applicable ANSI, OSHA or other safety standard.

Safety Warning: RKI, Inc. cranes are not intended to be used, or incorporated as a component of any other equipment which may be used for the lifting or moving of people. Any such use is absolutely and categorically contrary to RKI, Inc.'s recommendation.

INTRODUCTION:

RKI cranes are designed and manufactured to provide you years of safe, dependable performance.

This manual has been provided to give you specific information regarding the safe operation and upkeep of your crane.

It is very important that all who operate or service the crane should begin by thoroughly reading this manual. In addition, the supervisor, and others concerned with the operation of the crane, should read this manual. Remember that an uninformed or careless operator can make the operation of any equipment dangerous.

The information in this manual helps to insure that your RKI crane is installed properly and operated safely. However it is not a definitive guide to every possible situation or circumstance. If you have any questions or require additional information, please contact RKI.

SPECIFICATIONS

Model: 2500-3-9

Moment Rating:

7,500 ft. lbs

Lift Capacities:

2,500 lbs. @ 3 ft.	1,071 lbs. @ 7 ft.
1,875 lbs. @ 4 ft.	937 lbs. @ 8 ft.
1,500 lbs. @ 5 ft.	833 lbs. @ 9 ft.
1,250 lbs. @ 6 ft.	

Boom:

Manual telescoping boom extension lengths 5' 7" to 9' 1". Elevation lifting position: -0°, 15°, 30°, 45°, 60°, and 75°.

Line Speed: Over 13 feet per minute for single line (first rope layer).

Load Sensor:

A load sensor is standard to automatically protect overload.

Winch Cable and Block:

52' of 3/16" galvanized aircraft cable is supplied with traveling block for double line operation.

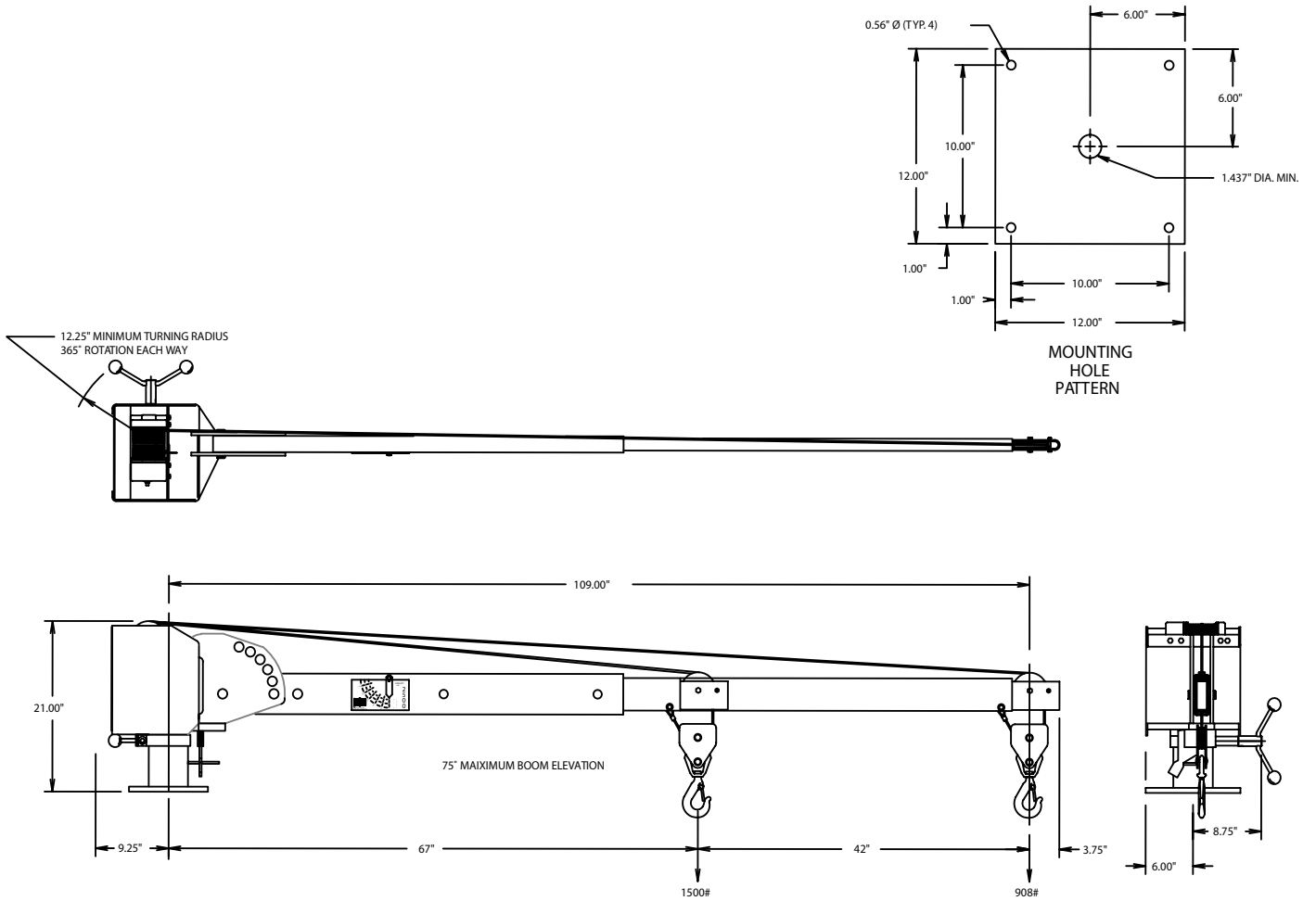
Electrical:

12 Volt D.C. electrical solenoid valves control all the powered functions.

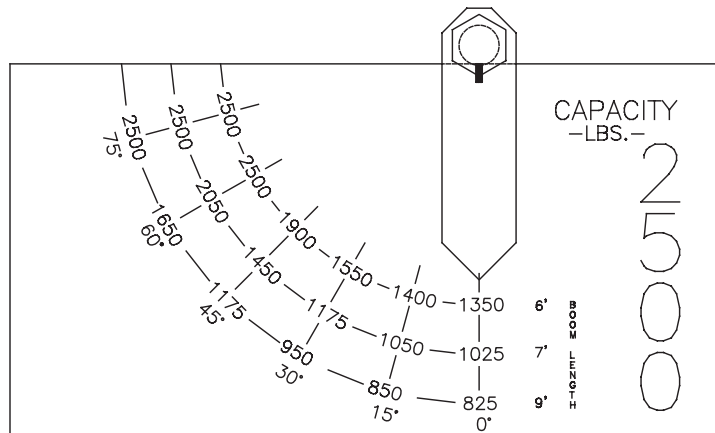
Specifications:

- Weight: 230 lbs.
- Length: 10' 2"
- Width: 15"
- Height: 21"
- Base Plate Dimensions: 12" x 12"
- Truck Requirements: 8,600 lbs. GVWR (Minimum)
- Jack Leg: p/n JKL1 or equivalent

OVERALL DIMENSIONS



2500 SERIES CAPACITY CHART



INSTALLATION INSTRUCTIONS

1. Crane mounting base and structure must be capable of safely supporting the crane assembly and its maximum rated load. The support structure for the mounting base must be tied directly to the main frame members of the vehicle.
2. Disconnect negative battery terminal from your vehicle's battery to avoid electrical shortage. Drill mounting hole pattern in mounting base plate per detail shown in the owner's manual for the RKI crane model being installed.
3. Install crane assembly on mounting base. Install mounting bolts with nuts and washers. **Note: use only bolts, nuts, and washers provided with crane.** Do not substitute.
4. If crane is being installed on a service or utility body, seal around all holes and bolts with silicone or equivalent sealer.
5. Tighten bolts in a criss-cross pattern, alternating until all bolts are tight.
6. Install power cord in crane. Route the power cord along vehicle's frame rail to vehicle's battery. Care must be taken so that the power cable is not positioned against burrs, sharp edges or anything that would chafe the cable insulation. Cable should be supported at intervals to prevent sagging or dragging. Use rubber grommets where the cable passes through bulkheads.
7. Cut the cable to minimum required length and connect it to the positive post of the vehicle's battery with the appropriate lug or clamp connection.
8. Use the supplied ground cable to ground the crane base, mounting base, or service body to the truck chassis. Use rubber grommets where the cable passes through bulkheads.
9. If the vehicle's negative battery cable is grounded to the vehicle's engine, install a second cable from the negative post of the battery to the vehicle's frame or from the engine to the vehicle's frame.
10. The vehicle should be equipped with a minimum 105-amp alternator, but larger is highly recommended.
11. To check if the battery and charging system is adequate, start vehicle's engine and allow it to run at a fast idle. Measure voltage at the crane's power connection. Minimum voltage should be 13 volts at this connection. If the measurement is less than 13 volts, replace battery, alternator, or add an additional battery.
12. Vehicle should be running during all crane operation.
13. Circuit breakers are required for all crane installations (Distributor Furnished Item). Circuit breakers for 2000, 2500, and 3200 Series Cranes are to be 150 amps.

BATTERY

Adequate battery power is a necessity for satisfactory crane operation. Most original equipment vehicle batteries are designed for relatively light service of vehicle operation.

On vehicles with longer distances between battery and crane, or if heavy or extended periods of operation are anticipated, a heavy duty battery may be installed in the vehicle, or a second 12 volt battery added to the vehicle system, in order to increase available amperage. The vehicle charging system should be functioning properly. The battery charging system should supply a minimum of 13 volts DC at the crane with the vehicle engine running. The voltage should not drop below 9 volts when any function of the crane is actuated.

Normal operation of the crane should not require a second battery. However, if a second battery is used, it should be connected to the first battery in parallel; positive post to post and negative post to post.

The vehicle battery, and second battery if used, must be grounded directly to the chassis frame. If the vehicle battery is grounded to the engine block, a second # 2 gauge minimum ground cable must be added from the battery to the chassis frame or engine to the chassis frame. If the body is mounted to the truck on wood runners, or rubber mounts, a # 2 gauge ground cable must be added between the body and the chassis frame.

Maintain a regular schedule to ensure that the battery remains in good working condition. Clean all connections, check electrolyte levels, check for loose belts and make sure that your vehicle charging system is operating properly.

WARNING:

- 1. FEDERAL LAW (49 CFR PART 571) REQUIRES THAT THE FINAL STAGE MANUFACTURER OF A VEHICLE CERTIFY THAT THE VEHICLE COMPLIES WITH ALL APPLICABLE REGULATIONS. ANY MODIFICATIONS OF THE VEHICLE PRIOR TO THE FINAL STAGE ARE ALSO CONSIDERED INTERMEDIATE STAGE MANUFACTURING AND MUST BE CERTIFIED AS TO COMPLIANCE. THE INSTALLER IS RESPONSIBLE FOR COMPLIANCE WITH ALL APPLICABLE FEDERAL AND STATE REGULATIONS AND REQUIRED TO CERTIFY THAT THE VEHICLE IS IN COMPLIANCE.**
- 2. THE INSTALLER OF THE CRANE IS RESPONSIBLE TO COMPLY WITH THE OSHA TRUCK CRANE STABILITY REQUIREMENTS AS SPECIFIED BY 29 CFR PART 1910.180 (C), (I).**

OPERATING INSTRUCTIONS

1. Do not operate this crane unless you have thoroughly read and understand the information contained in this manual.
2. Cranes shall be operated only by the following qualified personnel:
 - a. Designated persons
 - b. Trainees under direct supervision of a designated person
 - c. Maintenance
 - d. Inspectors (crane)
3. No one other than the personnel specified in (2) above shall enter the crane's operating area, with the exception of persons such as supervisors, and those specific persons authorized by supervisors whose duties require them to do so, and then only in the performance of their duties and with the knowledge of the operator or other appointed persons.
4. The operator shall be familiar with the equipment and its proper care. If adjustments or repairs are necessary, the operator shall promptly report this to an appointed person, and shall notify the next operator.
5. The operator at the start of each shift shall test all controls. If any control does not operate properly, they shall be adjusted or repaired before operations are begun.
6. Seek the best possible work site for the operation when parking the truck mounted crane. The parking location should be firm, dry and level ground or pavement, which can adequately reach the load by the rated capacity of the crane.
7. The truck mounted crane shall not be parked on uneven, rocky or muddy terrain, steep grades or obstructed overhead locations.
 - a. If work must be performed on an incline, make sure to position the truck on the downhill side of the work site. By positioning the truck this way, any accidental slippage will shift the unit away from the work rather than into it.
 - b. If the truck must be parked across the grade of an incline, always keep the boom on the uphill side of the truck. Always park so that the maximum number of operations can be performed without repositioning the vehicle.
8. Fully extend the outriggers out and to the ground to provide firm support and keep the truck mounted crane as level as possible during the operation. When operating on soft terrain use wider pads or boards under the outrigger feet. Blocking under the outrigger feet shall be of sufficient strength to prevent crushing, bending, or shear failure.
9. After the truck mounted crane has been properly positioned, engage the emergency brake and start the engine.
10. Vehicle should be running during all crane operations. This will enable the alternator to properly recharge the battery.
11. If unit is equipped with a power disconnect switch, turn on power to the crane.
12. Lower the winch to detach the crane hook from the tie-down eye.

OPERATING INSTRUCTIONS (CONTINUED)

Table 1

Normal Voltage, kV (Phase to Phase)	Minimum Required Clearance, ft (m)
Operation near High Voltage Power Line	
to 50	10 (3.05)
Over 50 to 200	15 (4.60)
Over 200 to 350	20 (6.10)
Over 350 to 500	25 (7.62)
Over 500 to 750	35 (10.67)
Over 750 to 1000	45 (13.72)
Operation in Transit With No Load and Boom Lowered	
to 0.75	4 (1.22)
Over 0.75 to 50	6 (1.83)
Over 50 to 350	10 (3.05)
Over 345 to 750	16 (4.87)
Over 750 to 1000	20 (6.10)

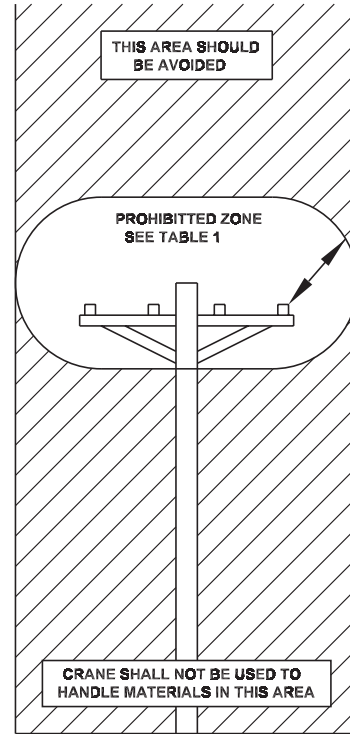


Figure 1

13. If the boom is to be elevated, take the winch line in (up) enough to relieve the pressure on boom indexing pin. Remove the indexing pin, elevate the boom to the desired location and replace the pin.
14. Always leave at least five wraps of line on the drum.
15. Release the rotation brake and rotate the boom to the desired working position.
16. Always lift the boom to clear the boom support before you rotate or extend boom to desired position. Always look in the direction the boom is traveling.
17. If the boom extension is required, lower the boom assembly to the horizontal position, and remove the pin holding the main boom and extension booms together. Lower the winch line to allow for proper extension, pull the extension boom out to the desired position, and reinsert the pin.
18. Re-adjust the rotation brake to the load and to the incline of the truck.
19. ALWAYS lock rotation hand brake before lifting a load.
20. When operated near electric power lines, no part of the crane or load may enter into the danger zone shown in Figure 1.
21. Federal OSHA regulations (CFR Title 29 Part 1910.180) requires a minimum clearance between electric lines and any part of the crane or load to be 10' (3 m) for power line rating 50kv or below. For higher voltage, see Table 1.

OPERATING INSTRUCTIONS (CONTINUED)

22. Caution shall be exercised when working near overhead power lines because they can move horizontally or vertically due to wind, changing the danger zone.
23. While in transit with no load and boom lowered, the clearance shall be as specified in Table 1.
24. The crane is now in operating position and ready for handling the load.
25. Before starting to lift, the following conditions should be noted:
 - a. The hoist rope shall not be kinked.
 - b. Part lines shall not be twisted around each other.
 - c. The hook shall be brought over the load in such a manner as to minimize swinging.
 - d. The effect of ambient wind on the load and on crane stability.
26. The person directing the lift shall see that:
 - a. The crane is level and, where necessary, blocked.
 - b. The load is well secured and balanced in the sling or lifting device before it is lifted more than a few inches.
 - c. The lift and swing path is clear of obstructions.
 - d. Tension on the hoist line is kept at all times to prevent the line from fouling on the drum.
27. During lifting operations, care shall be taken that:
 - a. There is no sudden acceleration or deceleration of the moving load.
 - b. The load, boom, or other parts of the machine do not contact any obstruction.
 - c. The load or support straps are always connected to the hook
 - d. A chain link is never placed on the top of the hook in order to lift a load with the winch.
 - e. Ensure the safety latch on the hook is closed before lifting a load.
28. No crane shall be loaded beyond the rated capacities of the load rated chart.
29. When loads, which are not accurately known, are to be lifted, the person responsible for the job lift shall ascertain that the weight of the load does not exceed the crane ratings at the maximum radius at which the load is to be handled.
30. Your crane is equipped with a load sensor, which prevents overloading. If the crane's capacity is exceeded, load sensor deactivates the winch line in (up) function. The winch line out (down) function remains operational. When the overload is relieved, load sensor AUTOMATICALLY resets itself and the crane becomes fully functional. In the event the load sensor gets out of adjustment, contact the factory for instructions on recalibration.
31. The hoist rope shall not be wrapped around the load.
32. The load shall be attached to the hook by means of slings or other devices of sufficient capacity.
33. The operator shall not leave the controls while the load is suspended.
34. No person shall be permitted to stand or pass under a suspended load.
35. Side loading of boom shall be limited to freely suspended loads. Crane shall not be used for dragging loads sideways.

OPERATING INSTRUCTIONS (CONTINUED)

36. The operator shall never carry loads over people.
37. Neither the load nor boom shall be lowered below the point where less than five full wraps of rope remain on the winch drum.
38. When rotating the crane, sudden starts and stops shall be avoided. Rotating speed shall be such that the load does not swing out beyond the radius at which it can be controlled. A tag or restraint line should be used during rotation to control the load.
39. Personnel shall not be permitted to ride the bare hook or a load of material suspended from the hook.
40. Do not move the vehicle when the crane is being used.
41. Make sure the remote control is disconnected and properly stored in a dry area.
42. The crane shall be in a stowed position before traveling.

INSPECTION & MAINTENANCE SCHEDULE

Be sure to perform thorough and routine inspections and maintenance on your crane and truck just as you would with any other very expensive and very useful tool.

COMPONENT	DAILY	WEEKLY	MONTHLY	EVERY 3 MONTHS	YEARLY	NOTES
Motor Brushes				X		Check.
Cable Drum	X					Make sure the cable is wound evenly on the drum.
Cable	X					Check for cut or broken strands, kinking et cetera. **
Load Hook	X					Check for any cracks or deformation of the hook or latch
Sheaves and Bearings				X		Inspect for any damage and add grease to bearings. Make sure the sheaves turn freely.
Rotational Bearing						Repack every two years.
Roller Chains				X		Inspect for damage and lubricate as needed.
Winch					X	Use SAE 140 Gear Oil.
Base Mounting Bolts & Other Bolts		X				Check the bolt torque for the four mounting bolts and tighten other bolts as required.
Boom Wear Pads				X		Inspect pads and replace as required.
Boom Pivot				X Or more often under severe conditions		Add grease to fittings.*

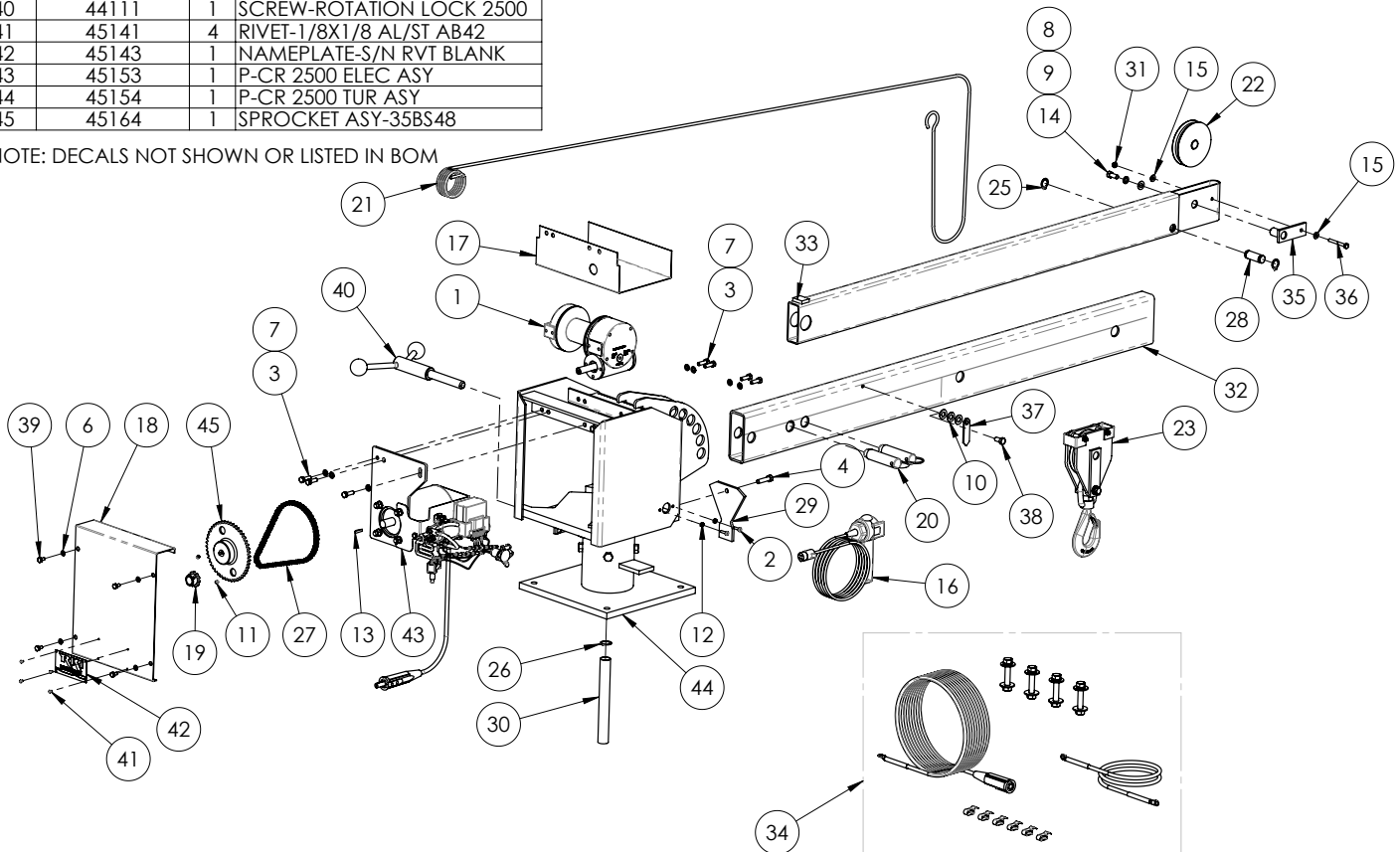
* All other bushings used are made of brass impregnated with an oil and graphite compound and require no maintenance. Other parts may be lubricated with a few drops of oil as needed.

**To extend the life of cable, clean it periodically with a wire brush and lubricate it lightly with oil.

2500 MAIN ASSEMBLY

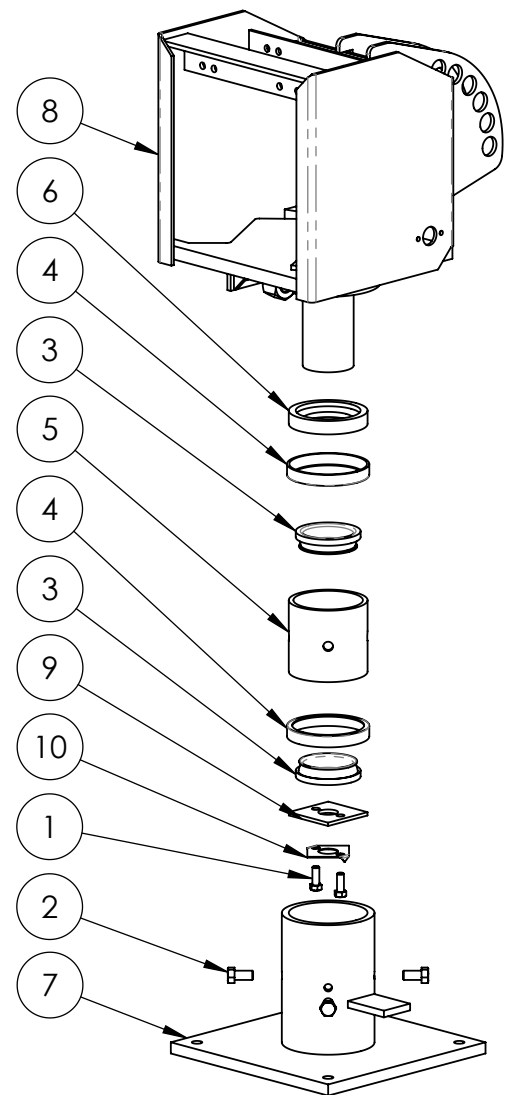
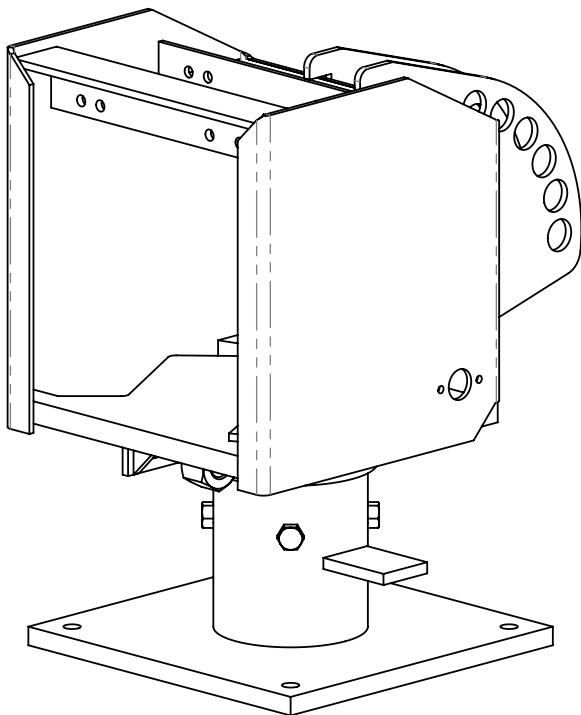
ITEM	PART #	QTY	DESCRIPTION
1	02MLX-2RSSR	1	WINCH-02MLX-2RSSR
2	03226	2	SCRW-PAN #10-24X3/4 SLOT
3	07760	8	BOLT-HX 5/16-18X1
4	07771	1	BOLT-HX 3/8-16X1 1/2 G5
5	07850	1	NUT-HX 3/8-16
6	07882	4	WASHER-LOCK 1/4
7	07884	8	WASHER-LOCK 5/16
8	07885	1	WASHER-FLT 3/8 N
9	07886	2	WASHER-LOCK 3/8
10	07887	3	WASHER-FLT 7/16 N
11	08014	2	SCREW-STSKT 0.25 0.2 OVL
12	08023	2	NUT-HX #10-24 (08023)
13	40729	1	KEY-WOODRUFF 606
14	40911	1	BOLT-HX 3/8-16X7/8
15	40986	2	WASHER-FLT 1/4 N (40986)
16	41140	1	REMOTE-2500/E8 15'
17	43002	1	COVER-2500 WINCH BOTTOM
18	43003	1	COVER-TURRET REAR 2500
19	43005	1	SPROCKET-35BS11 .75X.18
20	43016	2	PIN-QUICK 1.00 2.50 W/L
21	43022	1	ROPE-WIRE .19 52.0 EYE
22	43041	1	PULLEY-4.0 OD .75BORE
23	43044	1	BLOCK ASY-TRAV 2000/2500
24	43059	1	PIN-GRVD. 1.00 2.56
25	43139	2	RING-RTNG EXT 0.750 1P
26	43140	3	RING-RTNG EXT 1.000 1P
27	43150	1	CHAIN-ROLLER #35 23.87
28	43167	1	PIN-GRVD 0.75 1.59
29	43181	1	PLATE-2500 MOUNT STOP
30	43227	1	SLEEVE-2500 QUILL
31	43425	1	NUT-HEX .250NC FLEX
32	43459	1	BOOM-2500-3-9 MAIN
33	43460	1	BOOM-2500-3-9 EXT
34	43745	1	P-CR MTG HDWR .500
35	43796	1	PIN-W/KPR 0.75 1.31/2500
36	44002	1	BOLT-HX 1/4-20X2 1/4
37	44009	1	POINTER-DEGREE INDICATOR
38	44031	1	BOLT-HX 3/8-16X3/4 LK
39	44036	4	BOLT-HX 1/4-20X1/2
40	44111	1	SCREW-ROTATION LOCK 2500
41	45141	4	RIVET-1/8X1/8 AL/ST AB42
42	45143	1	NAMEPLATE-S/N RVT BLANK
43	45153	1	P-CR 2500 ELEC ASY
44	45154	1	P-CR 2500 TUR ASY
45	45164	1	SPROCKET ASY-35BS48

*NOTE: DECALS NOT SHOWN OR LISTED IN BOM



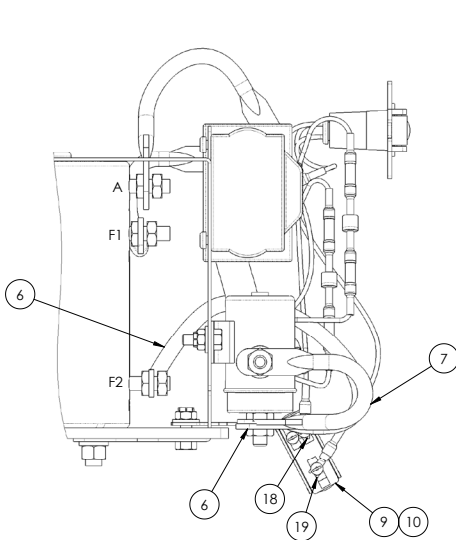
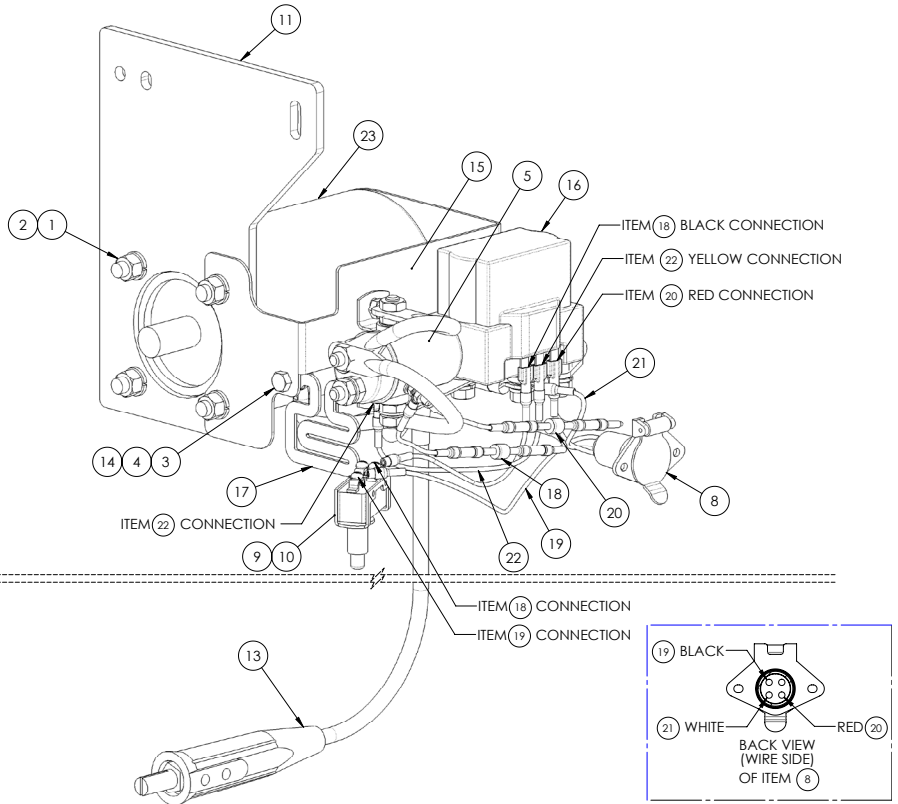
2500 TURRET ASSEMBLY (P/N 45154)

ITEM	PART #	QTY	DESCRIPTION
1	07769	2	BOLT-HX 3/8-16X1
2	07784	4	BOLT-HX 1/2-13X1
3	43019	2	BEARING-CONE 2500 2.75ID
4	43020	2	BEARING-CUP 2500 4.43 OD
5	43035	1	SPACER-2000/2500 BRG BTM
6	43040	1	SPACER-2000/2500 BRG TOP
7	43065	1	BASE ASY-2500 TURRET
8	43067	1	TURRET ASY-2500
9	43196	1	PLATE - 2500 BRG CLAMP
10	43197	1	STRAP-LOCKING 2000-2500

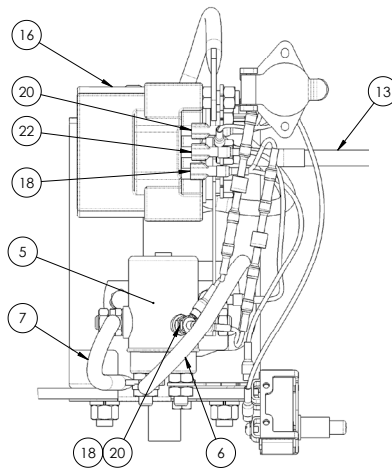


2500 WIRING ASSEMBLY (P/N 45153)

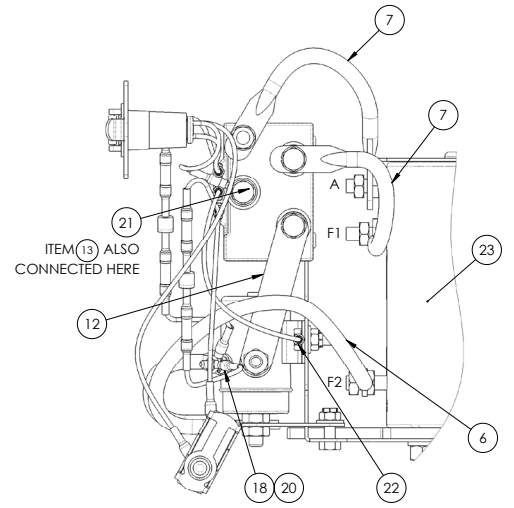
ITEM	PART #	QTY	DESCRIPTION
1	07872	4	NUT 3/8-24 GR5
2	07886	4	WASHER-LOCK 3/8
3	07898	3	BOLT-HX 1/4-20X3/4
4	40986	3	WASHER-FLT 1/4 N (40986)
5	41142	1	SOLENOID-STNDRD 12V
6	41151	1	WIRE-#04 10.5 RED
7	41190	3	WIRE-#04 6.31 RED
8	41273	1	CONNECTOR-04 PIN MAL SKT
9	43017	1	MICROSWITCH-STANDARD
10	43018	1	ACTUATOR-MICROSWITCH
11	43033	1	PLATE-2500 MOTOR MTG
12	43074	1	STRAP-SOL SHORT F/2500
13	43294	1	WIRE ASY-#02 36.0 PLUG
14	43425	3	NUT-HEX .250NC FLEX
15	45150	1	BRACKET-2500 SOLENOID
16	45151	1	CONTACTOR-DPDT 12V
17	45152	1	RESISTOR DYNAMIC BRAKE
18	45169	1	WIRE ASY-2500 SOL BLK
19	45170	1	WIRE ASY-2500 SWITCH BLK
20	45171	1	WIRE ASY-2500 SOL RED
21	45172	1	WIRE ASY-2500 PWR WHT
22	45173	1	WIRE ASY-2500 GRND YEL
23	49147	1	MOTOR-ELE 12V MBJ6302



TOP VIEW



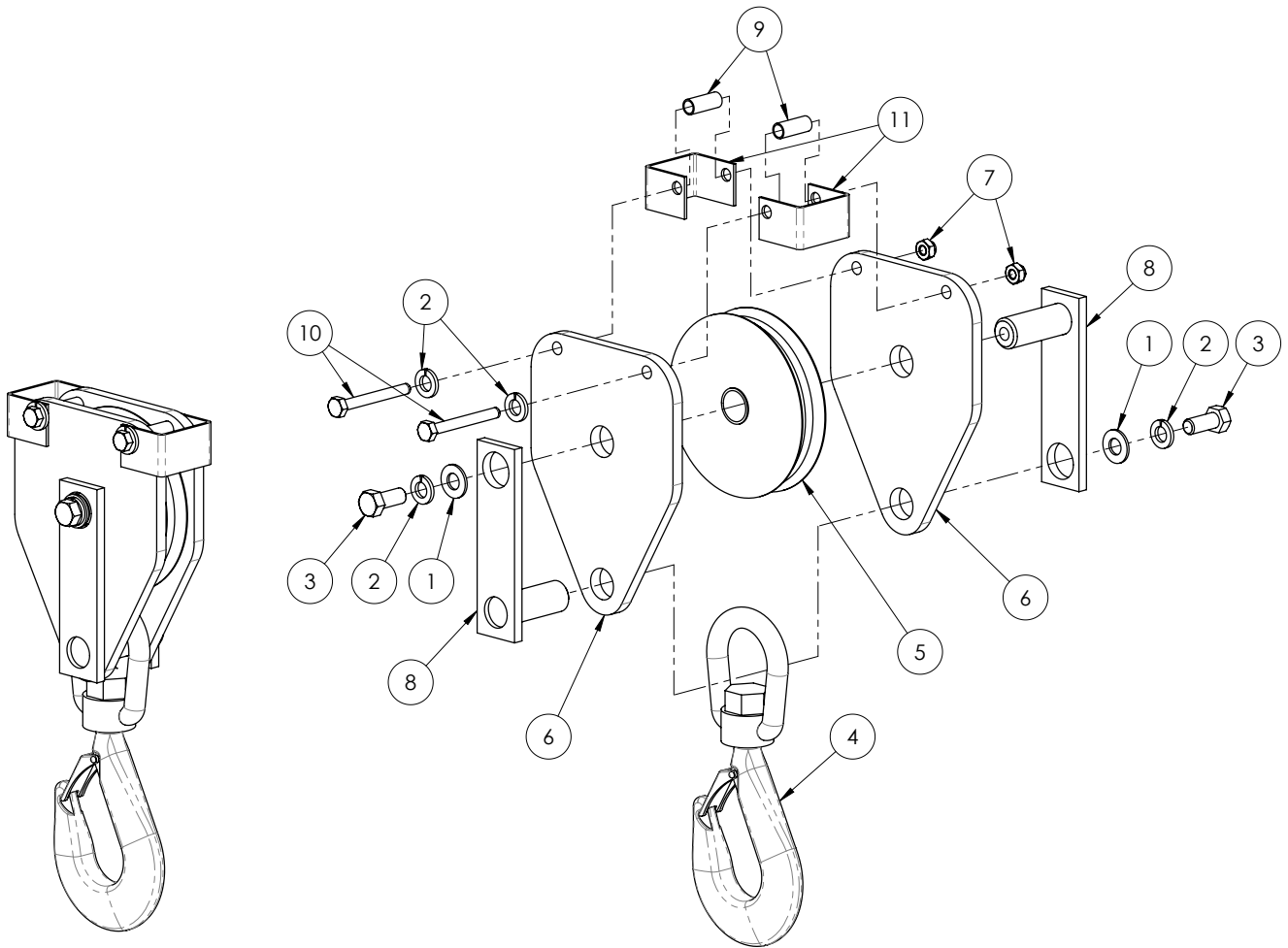
SIDE VIEW



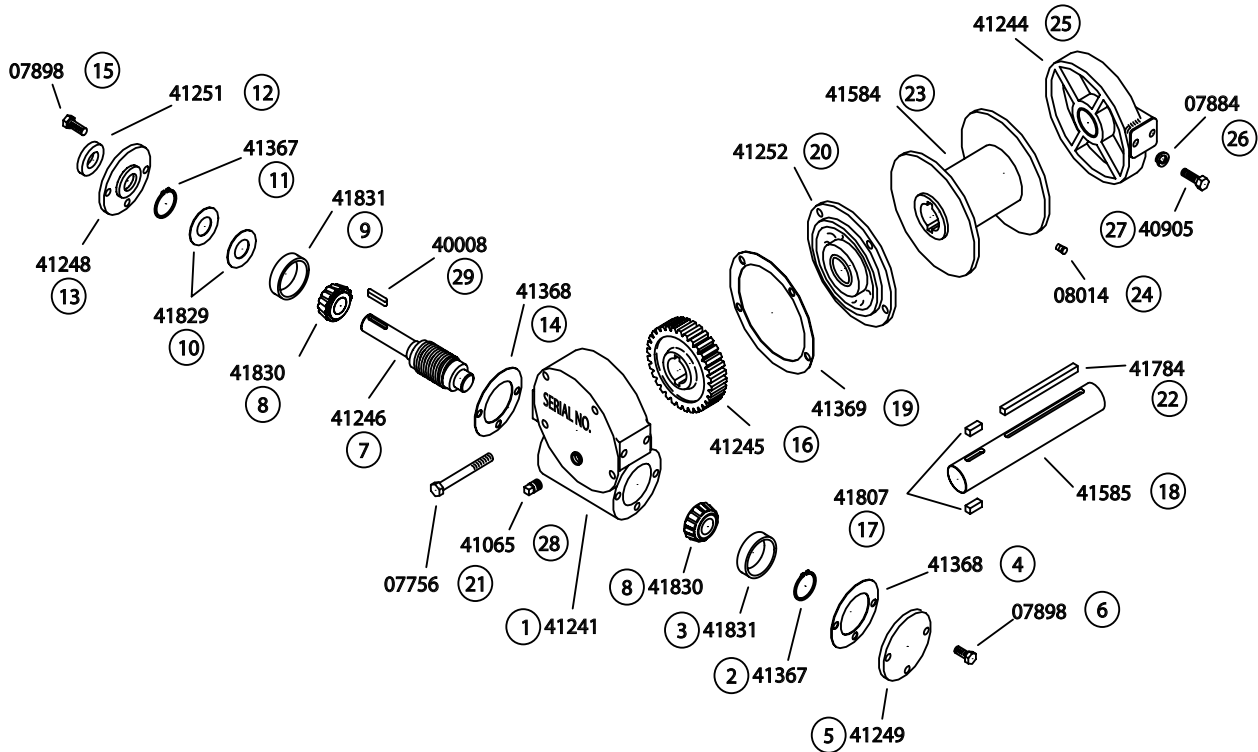
BOTTOM VIEW
(ITEM NOT 13 SHOWN IN THIS VIEW)

2500 TRAVELING BLOCK ASSEMBLY (P/N 43044)

ITEM	PART #	QTY	DESCRIPTION
1	07885	2	WASHER-FLT 3/8 N
2	07886	4	WASHER-LOCK 3/8
3	40911	2	BOLT-HX 3/8-16X7/8
4	43011	1	HOOK-1.5 TON SWIVEL W/L
5	43041	1	PULLEY-4.0 OD .75BORE
6	43349	2	PLATE-2500 TRAV BLOCK
7	43425	2	NUT-HEX .250NC FLEX
8	43797	2	PIN-WKPR .75 1.88 20/25
9	43909	2	SPACER-3200 BOOM HEAD
10	44002	2	BOLT-HX 1/4-20X2 1/4
11	44252	2	BRACKET-STABLIZER 4.218



02MLX-2RSSR WINCH ASSEMBLY 2500 CRANE



① INDICATES ORDER
OF ASSEMBLY

PART NO.	QTY	DESCRIPTION	PART NO.	QTY	DESCRIPTION
07756	4	Screw - HHCS .250"nc x 2.50"	41252	1	Cover - Hsg. W/41253 Bushing*
07884	8	Washer - Lock .312"	41367	2	Ring - Retaining
07898	6	Screw - HHCS .250"nc x .750"	41368	2	Gasket
08014	1	Screw - Set Skt .250"nc x .250"	41369	1	Gasket
40008	1	Key - Worm	41584	1	Drum
40905	8	Screw - HHCS .312" x .875"	41585	1	Shaft - Drum
41065	1	Plug - Pipe .250" Sq. Hd.	41784	1	Key - Drum
41241	1	Housing W/41253 Bushing*	41807	2	Key - Gear
41244	1	Bracket W/41370 Bushing*	41829	1 or 2	Shim - .010
41245	1	Gear - 36:1 RH.	41830	2	Bearing - Cone
41246	1	Worm & Shaft Asy. - 36:1 RH	41831	2	Bearing - Cup
41248	1	End Cap			
41249	1	End Cap			
41251	1	Oil Seal			

*NOTE: BUSHINGS MAY BE ORDERED SEPARATELY.

SPARE PARTS

It is recommended that repair parts for your crane be obtained from your local RKI distributor. Please note that unauthorized servicing or alteration of your crane will void the warranty.

Each crane is assigned a serial number, which is located on a serial tag on the rear cover. The serial number can also be found in the owner's manual that is provided with the crane.

Please record your serial number and retain a copy of your invoice for future reference. If your crane should need service, this information will be required.

TROUBLESHOOTING

Problem	Solution
Crane slowly stops while lifting	Check for weak battery or bad connections
Load sensor gets out of adjustment	Contact the factory.
Crane will not lift load	Load may exceed crane capacity. Refer to the load chart. Overload sensor may be set off. Lower load to ground and switch will automatically reset. You may need to reposition the truck closer to the load. Check microswitch in the turret by pressing the point on the microswitch. If it does not click, replace the microswitch.
Remote Control will not operate	Check for any loose, exposed or frayed wires. Make sure the switches return freely to the center position and are not sticking or loose. Inspect the plug pins for damage.
Sporadic Functions	Check the hot cable connections from the power source to the crane. Check for proper ground with good clean metal to metal connections (no paint, etc.). With the truck engine running, check the power source to confirm the crane is receiving 13 volts for proper operations. A replacement battery, alternator or adding an additional battery may be necessary.

Always provide the serial number of the crane (tag on rear cover) for further troubleshooting questions.

RKI LIFETIME WARRANTY

This warranty applies to anything we have manufactured.

The warranty applies to the original owner of the product for as long as he or she owns the product.

If something goes wrong which we determine was our fault we will repair or replace your product. The warranty doesn't apply to normal wear and tear.

Be sure to call your local distributor if you have a problem. We need the opportunity to talk to you about it. We may ask you to email us pictures or ship the product back to us for inspection.

Parts that we use but don't manufacture are covered to the extent of the warranty we get from the company that does manufacture them.

No loss of use coverage. No freight coverage. Repairs have to be authorized by us, in writing, in advance. No coverage if the product has been changed in any way.

To qualify for warranty the product must have been treated with respect in regard to normal installation, maintenance, and usage.

Accidents and acts of God aren't covered.

This warranty will be in effect until we decide to change it.

Other RKI Quality Products

- Aluminum Treadplate and Steel Truck Boxes for Pick-Up Trucks and Flatbeds
- Canopy Bodies
- Custom Truck Boxes and Service Bodies
- Line Bodies
- Saddle Compartments
- Service Bodies
- Space Packs
- Versatile Storage Systems
- Window Grilles



*RKI manufactures special cranes -
consult your nearest dealer with your custom needs.*

View more products at:
www.rkius.com



RKI, Inc.
2301 Central Parkway
Houston, Texas 77092

713.688.4414

FAX: 713.688.8982

*IN ORDER TO PROVIDE YOU WITH THE MOST INNOVATIVE AND
PROGRESSIVE EQUIPMENT, SPECIFICATIONS, AND DESIGNS ARE SUBJECT
TO CHANGE WITHOUT NOTICE.*